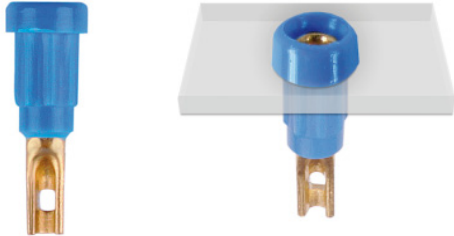


**Gefederte Ø 1 mm-Buchsen**

**Ø 1 mm Spring-loaded Sockets**

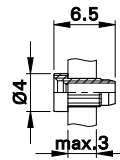
**EB1**

Isolierte Ø 1 mm-Buchse mit federnder Kontaktlamelle. Messing. Montage durch Einpressen in Bohrungen von Platten oder Gehäusen. **Lötanschluss.**

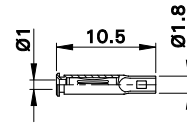


**EB1**

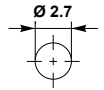
Insulated Ø 1 mm socket, spring-loaded with Multilam. Brass. The socket is pressed into predrilled panels. **Solder connection.**



I-EB1



LB1



Montagebohrung  
Panel drilling

Typ Type	Bestell-Nr. Order No.	Bemessungsspannung/-strom Rated voltage/current		*Farben *Colours
<b>EB1</b>	<b>23.1010-*</b>	30 VAC ~ 60 VDC / 20 A	<b>Au</b>	<b>21 22 23 24 25 29</b>

**Einzelteile**

**Component parts**

I-EB1	23.5000-*	Isolierteil / Insulator	<b>21 22 23 24 25 29</b>
LB1	41.0010	Buchse / Socket	

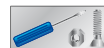
**Technische Daten**

**Technical data**

Bemessungsstrom	Rated current	<b>20 A</b>
Bemessungsspannung	Rated voltage	<b>30 VAC ~ 60 VDC</b>
Kontaktsystem	Contact system	<b>Ø 1 mm</b>
Bauform	Design	<b>Einpressbuchse, federnd, isoliert Press-fit socket, spring-loaded, insulated</b>
Anschluss	Connection	<b>Lötanschluss Solder connection</b>
Kontaktmaterial Buchse und Anschluss	Contact material socket and connection	<b>Messing, vergoldet Brass, gold-plated</b>
Isolationsmaterial	Insulation material	<b>PA</b>
Konformitäten	Conformities	<b>RoHS, Reach</b>



Einpressdorne **MB1**, Seite 84



Press-in tools **MB1**, page 84



Montageanleitung **MA102**  
[www.multi-contact.com](http://www.multi-contact.com)



Assembly instructions **MA102**  
[www.multi-contact.com](http://www.multi-contact.com)