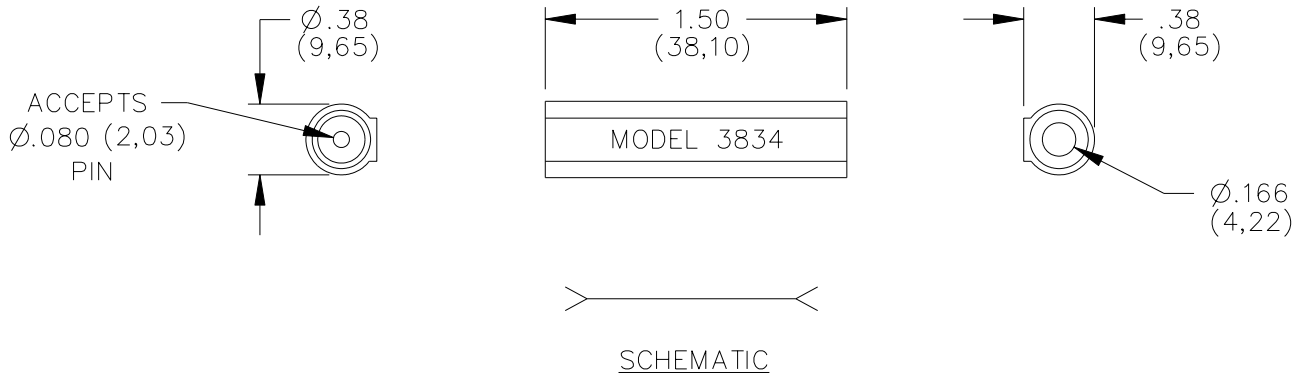


Model 3834 Banana Jack To Pin Jack Adapter



FEATURES:

- This splice accepts a standard banana plug on one end and a 2.0 (.080) pin tip plug on the other end.

MATERIALS:

Upper Conn.: Banana Jack

Material: Brass per QQ-B-626, Alloy 360, ½ Hard.

Finish: Nickel plated per QQ-N-290, Class 2, 200/300 microinches.

Insulation:

Polypropylene molded to banana jack body and pin tip body.

Marking: "POMONA ELECTRONICS CALIF." "MODEL 3834"

Lower Conn.:

Pin Tip Jack:

Material: Body – Brass per QQ-B-626, Alloy 360, ½ Hard.

Spring – Beryllium copper per QQ-C-533, Alloy 172, Cond. H.T.

Finish: Body – Same as upper conn.

Spring – Gold plated per MIL-G-45204, Type II, Class 00 over electroless nickel per MIL-C-26074,

Class 1, 200/300 microinches.

RATINGS:

Operating Temperature: +55°C. (+131°F.) Max.

Operating Voltage: 3000 VDC

Current: 5 Amperes

ORDERING INFORMATION: Model 3834-*

*=Color, -0 Black

Ordering Example: 3834-0 Adapter Color is Black. Additional colors may be quoted upon request.

All dimensions are in inches. Tolerances (except noted): .xx = ±.02" (.51 mm), .xxx = ± .005" (.127 mm).

All specifications are to the latest revisions. Specifications are subject to change without notice.

Registered trademarks are the property of their respective companies. Made in USA