

721 Pressure Calibrator

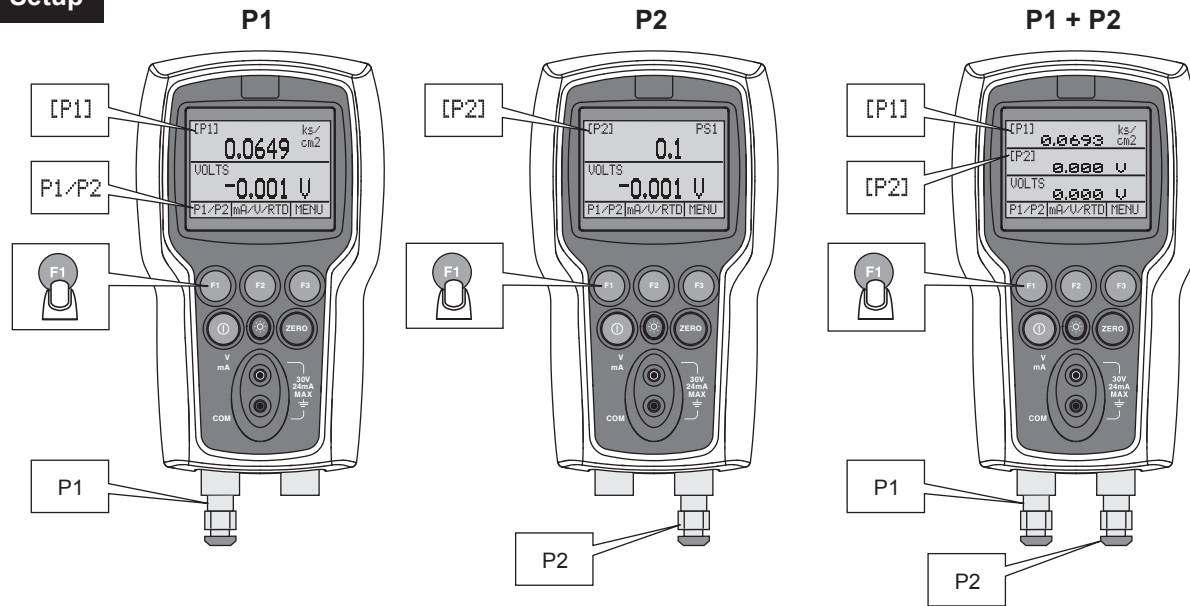
Quick Reference Guide

⚠ Warning

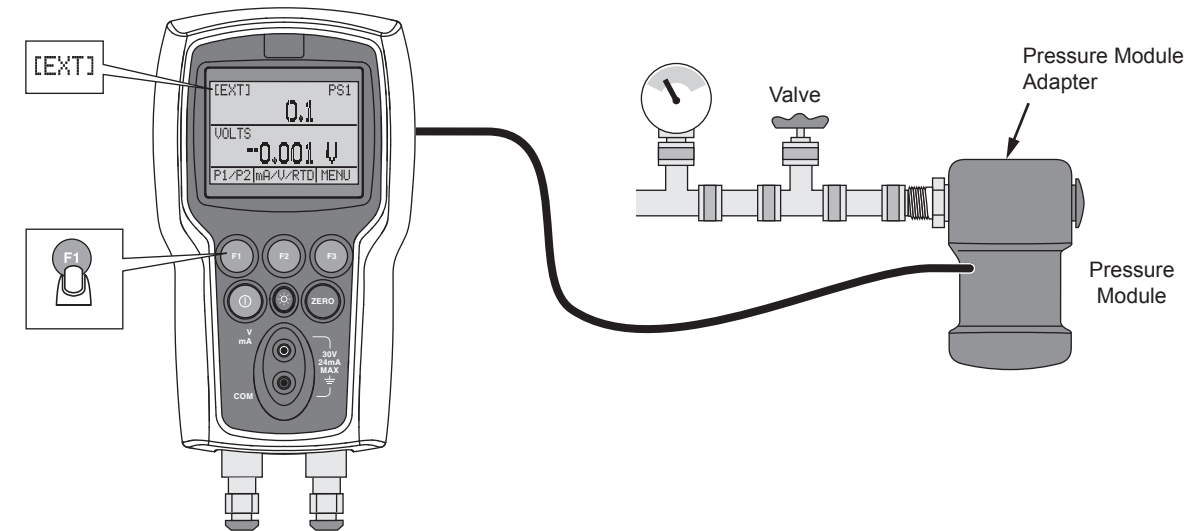
To prevent possible electrical shock, fire, or personal injury, read the "721 Safety Sheet" before you use this Product.

Go to www.fluke.com to register your product, download manuals, and find more information.

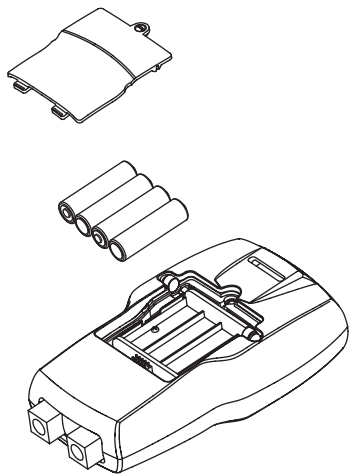
Setup



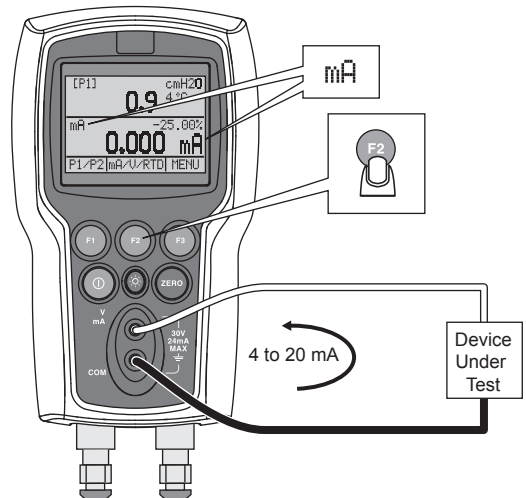
External Connection



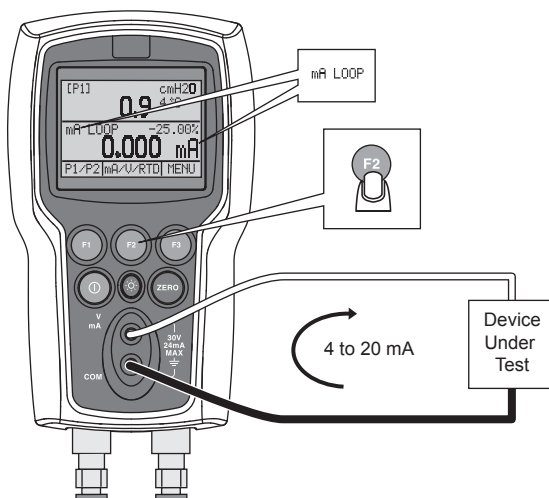
Batteries



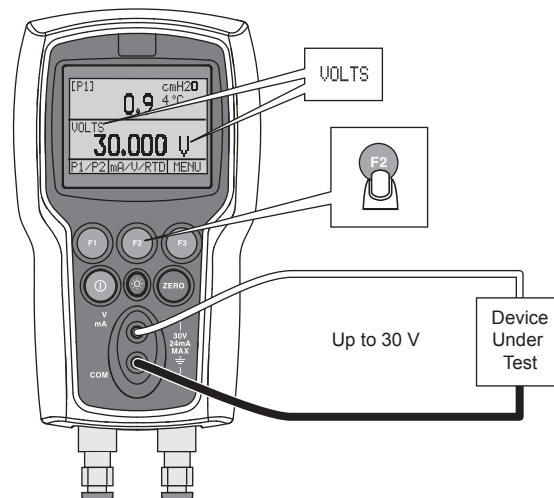
Measure mA



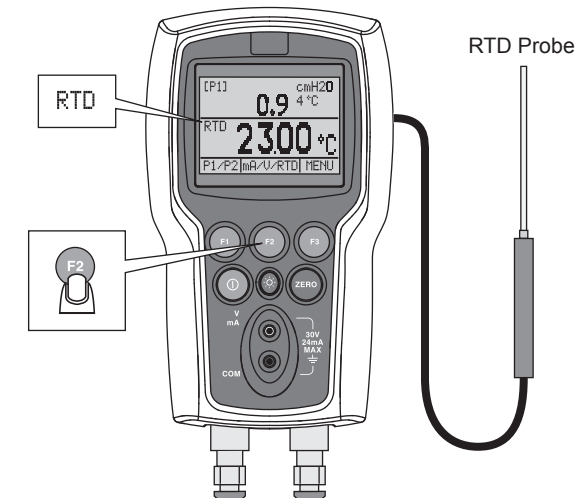
Measure mA 24 V Loop



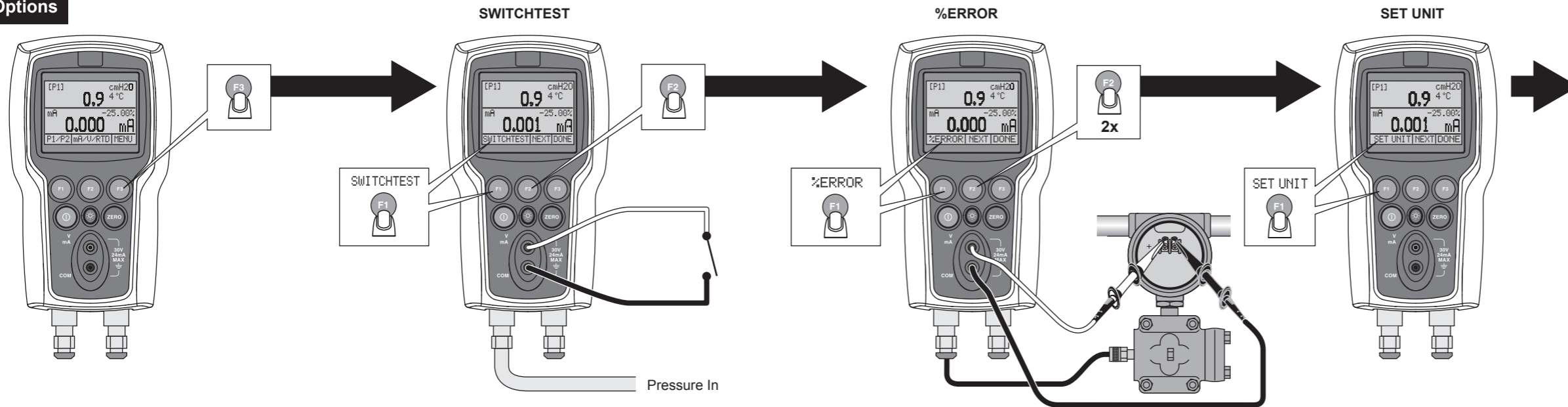
Measure Volts



Measure RTD

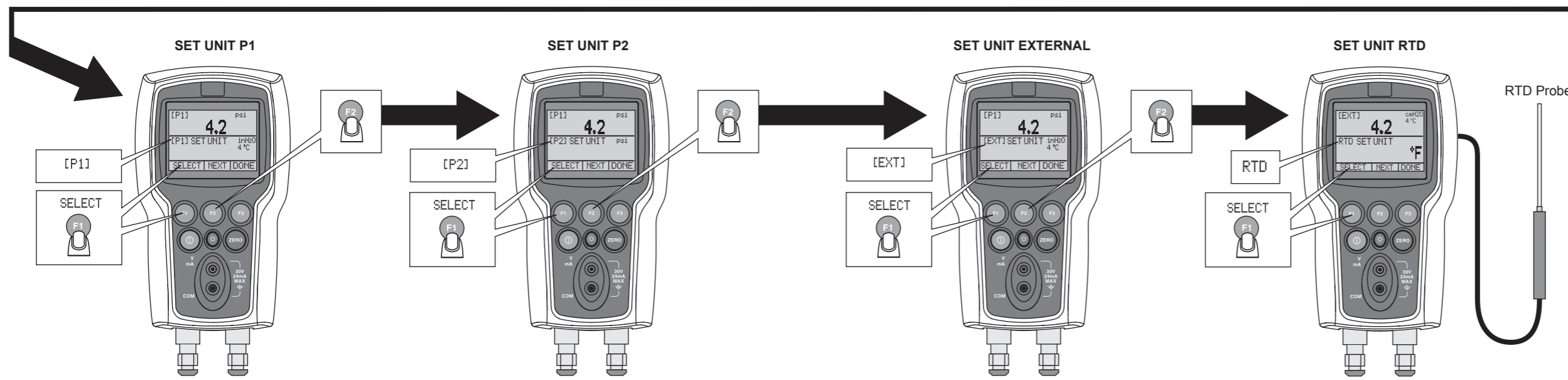
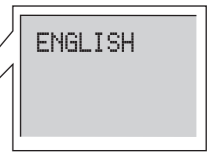


Menu Options



Set Language

- GERMAN
- NORWEGIAN
- ...
- ENGLISH



1. F1 +
2. and F1

At Power Up

