

Smart Pen Type DMM

NEW

- Compact in Size, Light in Weight and Simple in Use
- Double moulding provides comfortable and good feeling in hand
- Penlight illuminates brightly the point to be measured, even in dark place
- Backlight LCD is highly visible, even in darkness
- Auto power-off function saves the battery life
- Unique wrapping mechanism for test lead in the rear side compartment
- Unique protection mechanism for the test prod for safety
- All ranges including Ohm range are protected against overload voltage of 600V
- Designed in conformity with International safety standards IEC61010-1:2001 CAT.Ⅲ 600V



KEW MULTIMETER
KEW 1030

● KEW 1030 Specifications

| | |
|-------------------------|---|
| Measurement | |
| AC V | 4/40/400/600V(4 Range auto) ±1.3%rdg±5dgt(4/40V)(50/60Hz) ±1.6%rdg±5dgt(400/600V) (50/60Hz) |
| DC V | 400m/4/40/400/600V(5 Range auto) ±0.8%rdg±5dgt(400mV~400V) ±1.0%rdg±5dgt(600V) |
| Ω | 400/4k/40k/400k/4M/40MΩ(6 Range auto) ±1.0%rdg±5dgt(400Ω~4MΩ) ±2.5%rdg±5dgt(40MΩ) |
| Diode check | Test voltage approx. 0.3~1.5V |
| Continuity check | Buzzer sounds when resistance is 120Ω or less. |
| Capacitance | 50n/500n/5μ/50μ/100μF(5 Range auto) ±3.5%rdg±10dgt(50nF) ±3.5%rdg±5dgt(500n~50μF) ±4.5%rdg±5dgt(100μF) |
| Frequency | 5/50/500/5k/50k/200kHz ±0.1%rdg±5dgt (Measurable input:1.5Vrms or more) |
| Duty | 0.1~99.9% ±2.5%rdg±5dgt (Pulse width / Pulse cycle) |
| General | |
| Data hold | The measured value can be hold by pressing Data hold button |
| Battery voltage warning | When the battery voltage drops to 2.4V±0.2V or less |
| Auto power-off | Built-in |
| Safety standard / EMC | IEC61010-1:2001 CAT. III 600V IEC61010-031 IEC61326-1 |
| Power source | Button type battery LR44(SR44)1.5V x 2 |
| Dimensions | 190(L)×39(W)×31(D)mm |
| Weight | Approx. 100g (including batteries) |
| Accessories | Carrying case, LR44(1.5V) x 2, Instruction manual |

● Instrument layout



- ① Test lead (input terminal+);red
- ② Test lead (input terminal-);black
: Connected to the negative (-) side or the earth of the circuit.
- ③ Protection cover
: Covering the Test pin for safety purpose.
- ④ LED light ⑤ Barrier ⑥ Function switch ⑦ Hold key
- ⑧ Select key ⑨ LCD display

Functions for Easy to Use

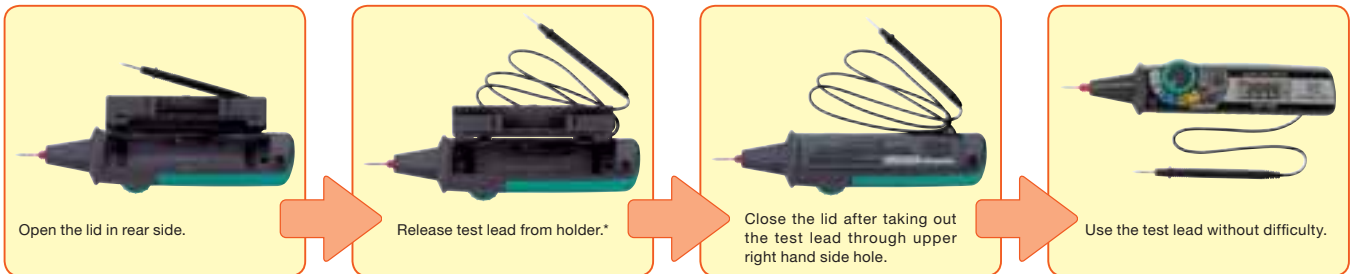
■ Long life LED light is of good use in dark place



■ Protection cover prevents unforeseen accident



■ Wrapping mechanism for test lead in rear side compartment



*Length of test lead is adjustable in 3 steps, ie, 60 cm, 40 cm and 20 cm.



Safety Warnings :

Please read the "Safety Warnings" in the instruction manual supplied with the instrument thoroughly and completely for correct use. Failure to follow the safety rules can cause fire, trouble, electrical shock, etc. Therefore, make sure to operate the instrument on a correct power supply and voltage rating marked on each instrument.

■ For inquires or orders :



KYORITSU ELECTRICAL INSTRUMENTS WORKS, LTD.

No.5-20,Nakane 2-chome, Meguro-ku,
Tokyo, 152-0031 Japan
Phone:81-3-3723-0131
Fax:81-3-3723-0152
URL:<http://www.kew-ltd.co.jp>
E-mail:info@kew-ltd.co.jp
Factories:Uwajima & Ehime